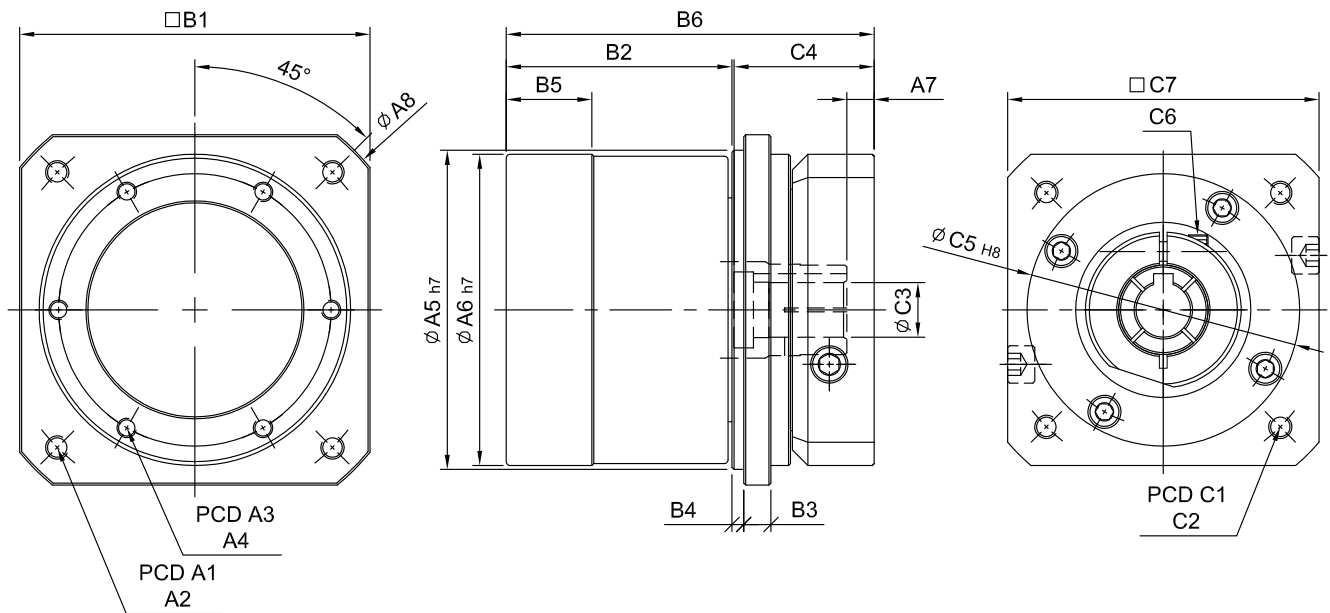
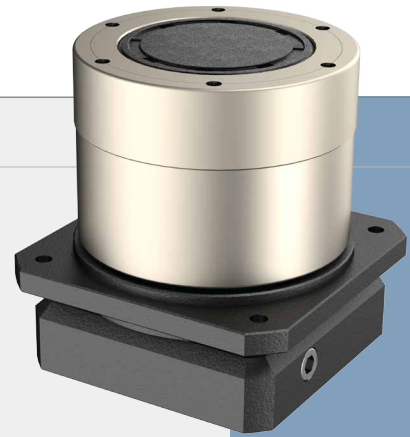


SERVOBOX Planetary Reducers

MODEL : SR

1-Stage RATIO : 2,
3, 4, 6, 9



unit: mm

	Model			
	Code	82	100	132
A	A1	100	122	166
	A2	M6 x P1.0	M8 x P1.25	M10 x P1.5
	A3	70	84	114
	A4	M5 x P0.8	M6 x P1.0	M8 x P1.25
	A5	82	100	132
	A6	80	96	128
	A7	7·9	8·17	11.5
	A8	116	139	184
B	B1	90	108	140
	B2	58	63	85.5
	B3	7	9.5	12
	B4	3	3.5	4
	B5	22	24	34
	B6	94.5	111.5	143
C	C1	85	115	130
	C2	M6 x P1.0	M6 x P1.0	M8 x P1.25
	C3	14·19	19·24	24·28
	C4	36·43	47·56	63.5
	C5	70	95	110
	C6	M5 x P0.8	M6 x P1.0	M8 x P1.25
	C7	80	110	130

High Precision Planetary Reducer

Model No.		Unit	Ratio	82	100	132
Rated Output Torque (Nominal output torque)	T_{2N}	Nm	2	96	145	301
			3	91	135	270
			4	84	128	265
			6	80	123	258
			9	75	116	246
Acceleration Torque	T_{2B}	Nm	2 ~ 9	1.5 Times of Rated Output Torque		
Max. Output Torque Emergency Stop Torque	T_{2NOT}	Nm	2 ~ 9	3 Times of Rated Output Torque		
Rated Input Speed	n_{1N}	rpm	2 ~ 9	3,000		
Max. Input Speed	n_{1B}	rpm	2 ~ 9	6,000		
Backlash		arcmin	2 ~ 9	≤ 6	≤ 6	≤ 6
Torsional Rigidity		Nm/arcmin	2 ~ 9	10	14	27
Max. Radial Force	F_{2rB}	N	2 ~ 9	3,000	3,400	7,200
Max. Axial Force	F_{2aB}	N	2 ~ 9	1,500	1,700	3,600
Service Life	L_H	hr	2 ~ 9	S5 Cycle Operation: >30,000 (S1 Continuous Operation: >15,000 hrs)		
Efficiency	η	%	2 ~ 9	≥ 97%		
Operating Temperature		°C	2 ~ 9	- 25° C ~ + 90° C		
Lubrication			2 ~ 9	Synthetic Grease		
Protection Class			2 ~ 9	IP65		
Mounting Position			2 ~ 9	Any		
Noise Level		dB	2 ~ 9	≤ 60	≤ 62	≤ 64
Weight ±3%		Kg	2 ~ 9	2.5		

■ Mass Moments of Inertia (kg.cm²)

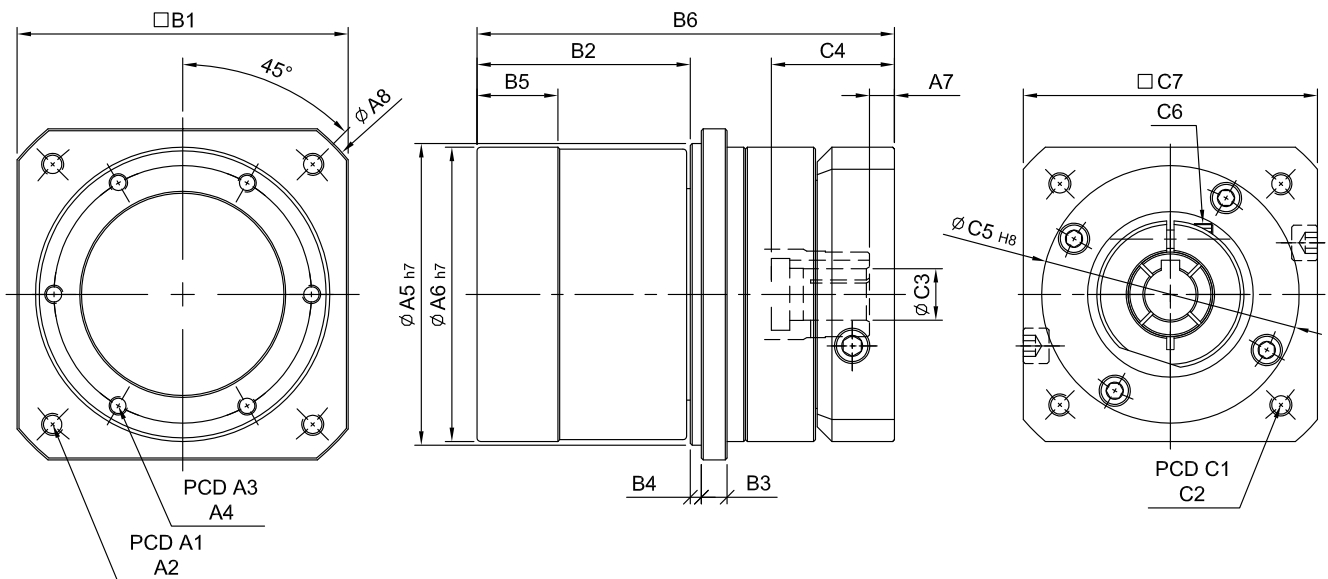
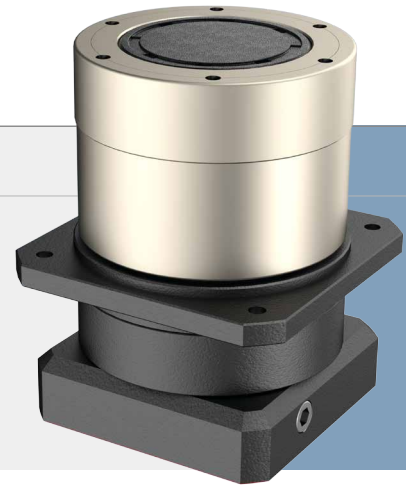
Ratio	82	100	132
2	0.3	0.5	2.7
3	0.3	0.5	2.7
4	0.3	0.5	2.7
6	0.3	0.5	2.7
9	0.3	0.5	2.7

SERVOBOX Planetary Reducers

MODEL : SR

2-Stage

RATIO : 10, 15, 20, 24, 30, 36, 40, 45, 60, 90



unit: mm

Model		82	100	132
A	Code			
	A1	100	122	166
	A2	M6 x P1.0	M8 x P1.25	M10 x P1.5
	A3	70	84	114
	A4	M5 x P0.8	M6 x P1.0	M8 x P1.25
	A5	82	100	132
	A6	80	96	128
	A7	7 · 9	8	8
B	A8	116	139	184
	B1	90	108	140
	B2	58	63	85.5
	B3	7	9.5	12
	B4	3	3.5	4
	B5	22	24	34
C	B6	113.5	137	168
	C1	85	115	145
	C2	M6 x P1.0	M6 x P1.0	M8 x P1.25
	C3	14 · 19	19	19 · 24
	C4	33.5 · 40.8	43.5	52
	C5	70	95	110
	C6	M5 x P0.8	M5 x P0.8	M8 x P1.25
	C7	80	110	130

High Precision Planetary Reducer

Model No.		Unit	Ratio	82	100	132
Rated Output Torque (Nominal output torque)	T_{2N}	Nm	10	96	145	301
			15	91	135	270
			20	84	128	265
			24	80	123	258
			30	80	123	258
			36	75	116	246
			40	84	128	265
			45	75	116	246
			60	80	123	258
			90	75	116	246
Max. Acceleration Torque	T_{2B}	Nm	2 ~ 9	1.5 Times of Rated Output Torque		
Max. Output Torque Emergency Stop Torque	T_{2NOT}	Nm	2 ~ 9	3 Times of Rated Output Torque		
Rated Input Speed	n_{1N}	rpm	2 ~ 9	3,000		
Max. Input Speed	n_{1B}	rpm	2 ~ 9	6,000		
Backlash		arcmin	2 ~ 9	≤ 8	≤ 8	≤ 8
Torsional Rigidity		Nm/arcmin	2 ~ 9	10	14	27
Max. Radial Force	F_{2rB}	N	2 ~ 9	3,000	3,400	7,200
Max. Axial Force	F_{2aB}	N	2 ~ 9	1,500	1,700	3,600
Service Life	L_H	hr	2 ~ 9	S5 Cycle Operation: >30,000 (S1 Continuous Operation: >15,000 hrs)		
Efficiency	η	%	2 ~ 9	≥ 94%		
Operating Temperature		°C	2 ~ 9	- 25° C ~ + 90° C		
Lubrication			2 ~ 9	Synthetic Grease		
Protection Class			2 ~ 9	IP65		
Mounting Position			2 ~ 9	Any		
Noise Level		dB	2 ~ 9	≤ 60	≤ 62	≤ 64
Weight ±3%		Kg	2 ~ 9	2.8		

■ Mass Moments of Inertia (kg.cm²)

Ratio	82	100	132
2	0.3	0.5	2.7
3	0.3	0.5	2.7
4	0.3	0.5	2.7
6	0.3	0.5	2.7
9	0.3	0.5	2.7