

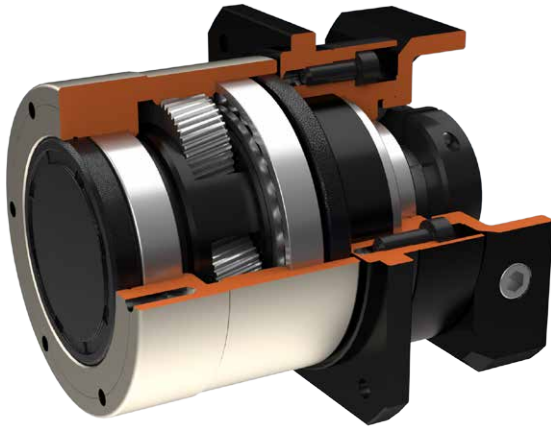


# Indication of Model Numbers

SR	100	9	P1	MOTOR
Type	Model	Ratio	Backlash Class	Motor Type
SR	82	1-Stage	Ps	Motor Brand & Model No.
SRD	100	2, 3, 4, 6, 9	P0	
	132	2-Stage 10, 15, 20, 24, 30, 36, 40, 45, 60, 90	P1 P2	

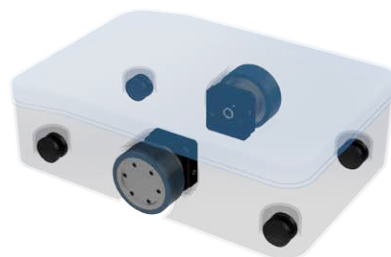
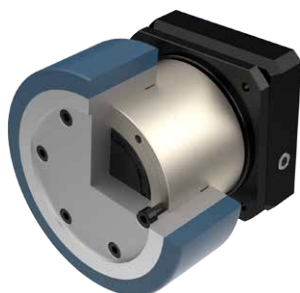


## Features of SR Series



The outer-rotating planetary reducer is directly driven by the housing, saving space.

## Applications

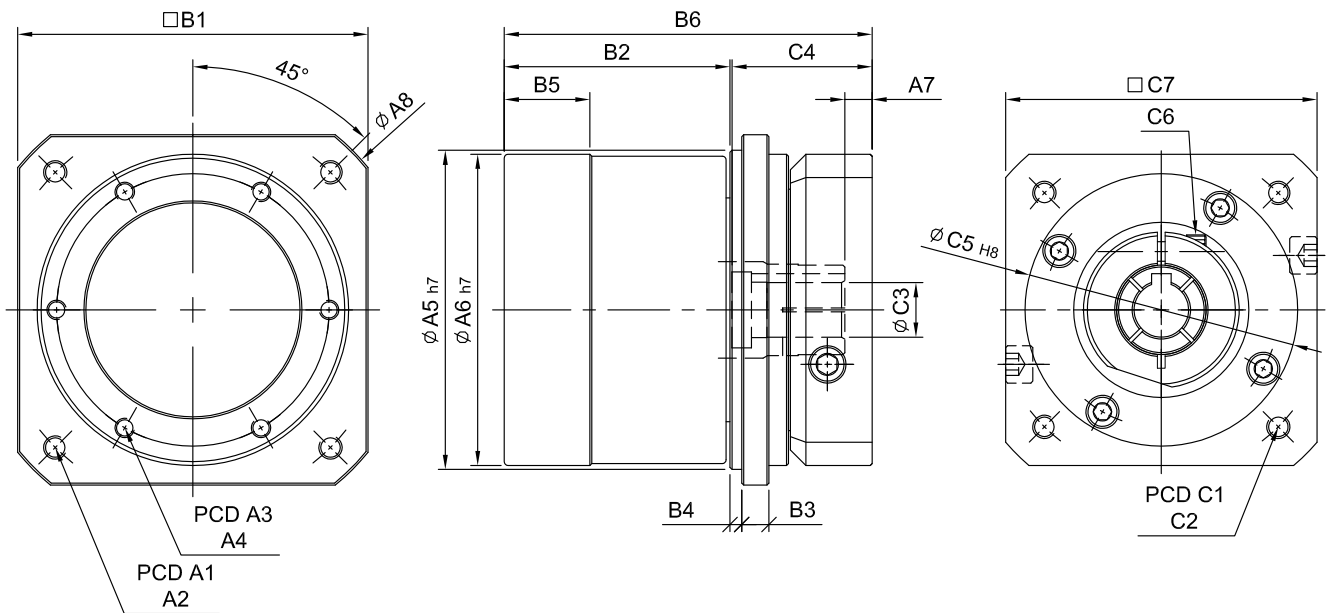
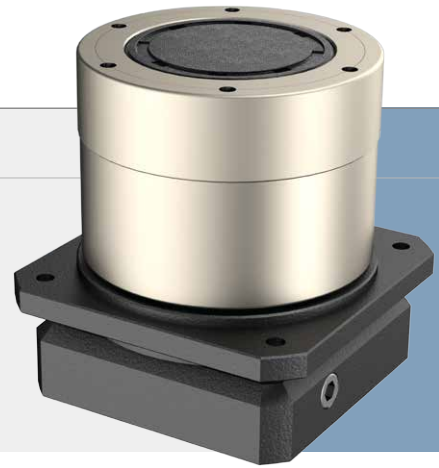


# SERVOBOX Planetary Reducers

## MODEL : SR

1-Stage

RATIO : 2, 3, 4, 6, 9



unit: mm

Model		82	100	132
A	Code			
	A1	100	122	166
	A2	M6 x P1.0	M8 x P1.25	M10 x P1.5
	A3	70	84	114
	A4	M5 x P0.8	M6 x P1.0	M8 x P1.25
	A5	82	100	132
	A6	80	96	128
	A7	7 · 9	8 · 17	11.5
B	B1	90	108	140
	B2	58	63	85.5
	B3	7	9.5	12
	B4	3	3.5	4
	B5	22	24	34
	B6	94.5	111.5	143
C	C1	85	115	130
	C2	M6 x P1.0	M6 x P1.0	M8 x P1.25
	C3	14 · 19	19 · 24	24 · 28
	C4	36 · 43	47 · 56	63.5
	C5	70	95	110
	C6	M5 x P0.8	M6 x P1.0	M8 x P1.25
	C7	80	110	130

## High Precision Planetary Reducer

Parameter	Code	Unit	Ratio	82	100	132
Rated Output Torque (Nominal output torque)	$T_{2N}$	Nm	2	86	131	271
			3	82	122	243
			4	76	115	239
			6	72	111	232
			9	68	104	221
Max. Acceleration Torque	$T_{2B}$	Nm	2 ~ 9	1.5 Times of Rated Output Torque		
Max. Output Torque Emergency Stop Torque	$T_{2NOT}$	Nm	2 ~ 9	3 Times of Rated Output Torque		
Rated Input Speed	$n_{1N}$	rpm	2 ~ 9	3,000		
Max. Input Speed	$n_{1B}$	rpm	2 ~ 9	6,000		
Backlash		arcmin	2 ~ 9	≤ 6	≤ 6	≤ 6
Torsional Rigidity		Nm/arcmin	2 ~ 9	10	14	27
Max. Radial Force	$F_{2rB}$	N	2 ~ 9	3,000	3,400	7,200
Max. Axial Force	$F_{2aB}$	N	2 ~ 9	1,500	1,700	3,600
Service Life	$L_H$	hr	2 ~ 9	S5 Cycle Operation: >30,000 (S1 Continuous Operation: >15,000 hrs)		
Efficiency	$\eta$	%	2 ~ 9	≥ 97%		
Operating Temperature		°C	2 ~ 9	- 25° C ~ + 90° C		
Lubrication			2 ~ 9	Synthetic Grease		
Protection Class			2 ~ 9	IP65		
Mounting Position			2 ~ 9	Any		
Noise Level		dB	2 ~ 9	≤ 60	≤ 62	≤ 64
Weight ±3%		Kg	2 ~ 9	2.5	4	8.9

### ■ Mass Moments of Inertia (kg.cm<sup>2</sup>)

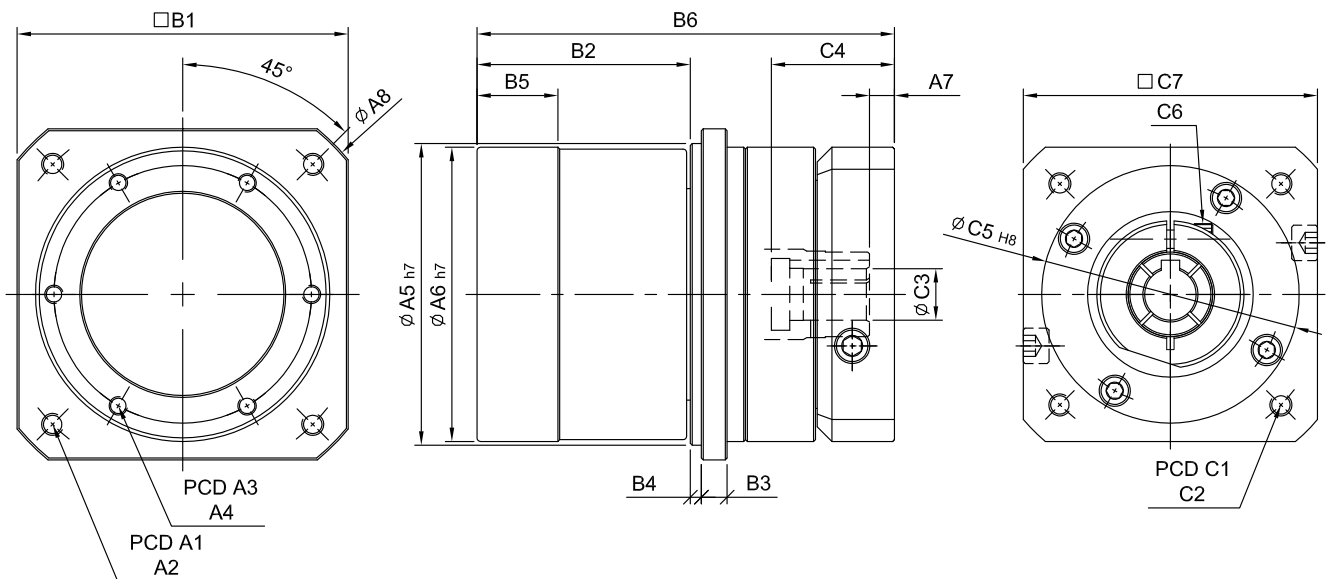
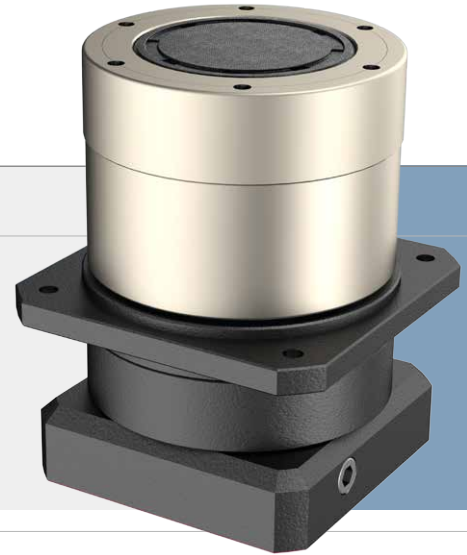
Ratio	82	100	132
2~9	0.7	0.9	3.2

# SERVOBOX Planetary Reducers

## MODEL : SR

2-Stage

RATIO : 10, 15, 20, 24, 30, 36, 40, 45, 60, 90



unit: mm

Model	82	100	132
<b>A</b>			
Code			
A1	100	122	166
A2	M6 x P1.0	M8 x P1.25	M10 x P1.5
A3	70	84	114
A4	M5 x P0.8	M6 x P1.0	M8 x P1.25
A5	82	100	132
A6	80	96	128
A7	7 · 9	8	8
A8	116	139	184
<b>B</b>			
B1	90	108	140
B2	58	63	85.5
B3	7	9.5	12
B4	3	3.5	4
B5	22	24	34
B6	113.5	137	168
<b>C</b>			
C1	85	115	145
C2	M6 x P1.0	M6 x P1.0	M8 x P1.25
C3	14 · 19	19	19 · 24
C4	33.5 · 40.8	43.5	52
C5	70	95	110
C6	M5 x P0.8	M5 x P0.8	M8 x P1.25
C7	80	110	130

## High Precision Planetary Reducer

Parameter	Code	Unit	Ratio	82	100	132
Rated Output Torque (Nominal output torque)	$T_{2N}$	Nm	10	86	131	271
			15	82	122	243
			20	76	115	239
			24	72	111	232
			30	72	111	232
			36	68	104	221
			40	76	115	239
			45	68	104	221
			60	72	111	232
			90	68	104	221
Max. Acceleration Torque	$T_{2B}$	Nm	10 ~ 90	1.5 Times of Rated Output Torque		
Max. Output Torque Emergency Stop Torque	$T_{2NOT}$	Nm	10 ~ 90	3 Times of Rated Output Torque		
Rated Input Speed	$n_{1N}$	rpm	10 ~ 90	3,000		
Max. Input Speed	$n_{1B}$	rpm	10 ~ 90	6,000		
Backlash		arcmin	10 ~ 90	≤ 8	≤ 8	≤ 8
Torsional Rigidity		Nm/arcmin	10 ~ 90	10	14	27
Max. Radial Force	$F_{2rB}$	N	10 ~ 90	3,000	3,400	7,200
Max. Axial Force	$F_{2aB}$	N	10 ~ 90	1,500	1,700	3,600
Service Life	$L_H$	hr	10 ~ 90	S5 Cycle Operation: >30,000 (S1 Continuous Operation: >15,000 hrs)		
Efficiency	$\eta$	%	10 ~ 90	≥ 94%		
Operating Temperature		°C	10 ~ 90	- 25° C ~ + 90° C		
Lubrication			10 ~ 90	Synthetic Grease		
Protection Class			10 ~ 90	IP65		
Mounting Position			10 ~ 90	Any		
Noise Level		dB	10 ~ 90	≤ 60	≤ 62	≤ 64
Weight ±3%		Kg	10 ~ 90	2.8	4.6	10.1

### ■ Mass Moments of Inertia (kg.cm<sup>2</sup>)

Ratio	82	100	132
10~90	0.3	0.5	0.8